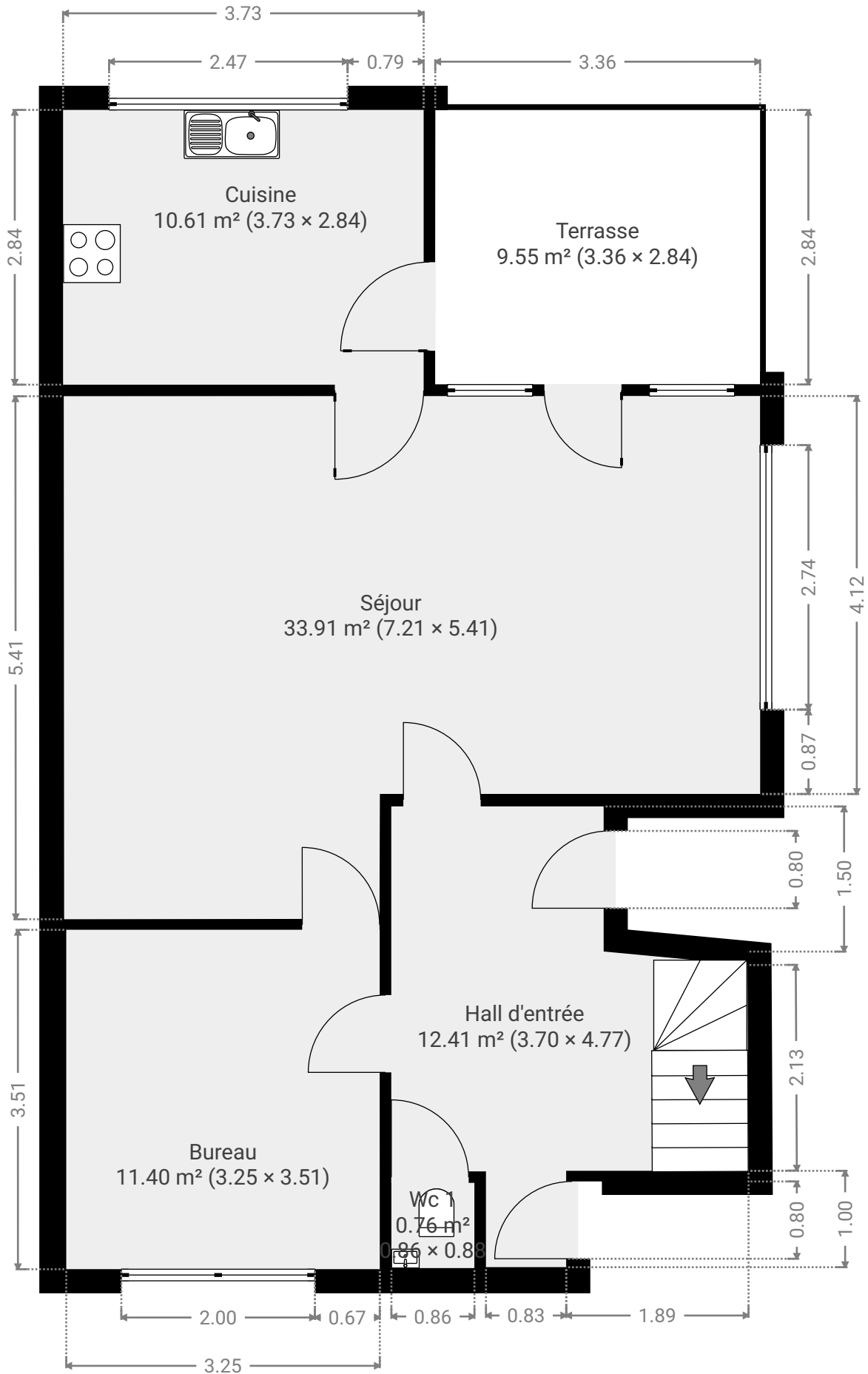


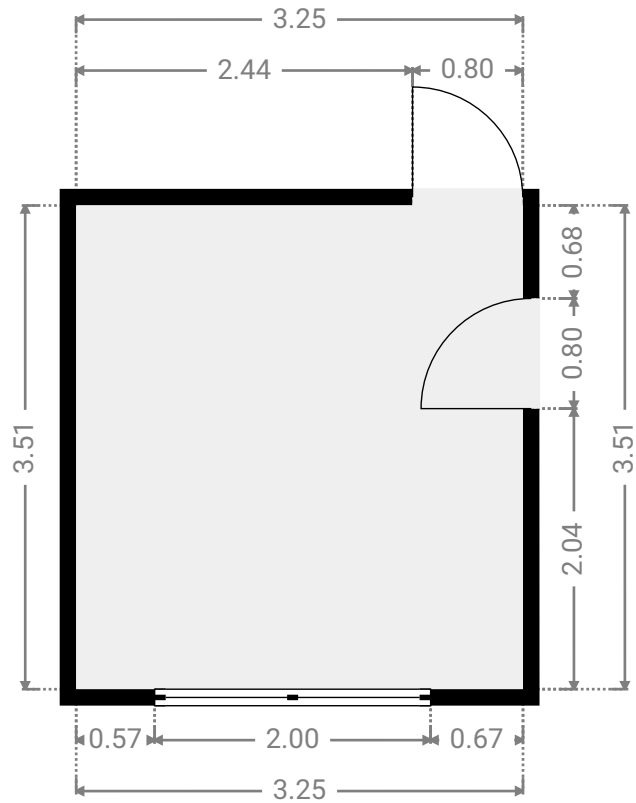
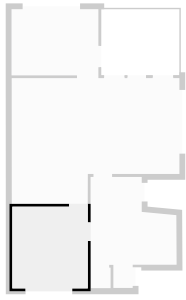
S30704

ENVOYÉ PAR
Operateur 1 Servisco

CRÉÉ LE
22 mai 2026

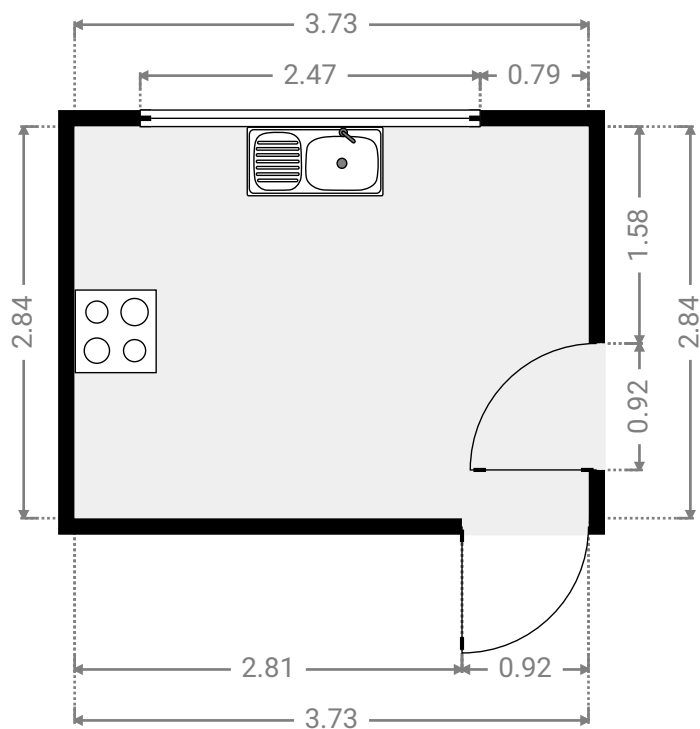
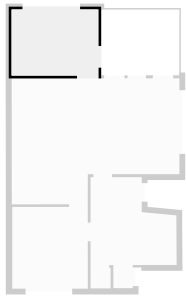
Surface totale 278.97 m ²	Étages 4	Pièces 17	Salles de bain 2
--	--------------------	---------------------	----------------------------



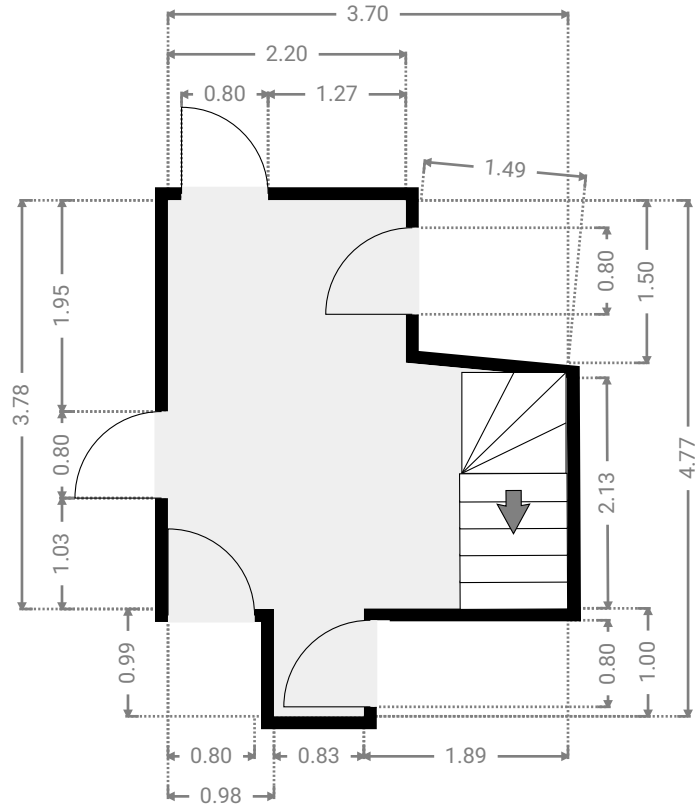
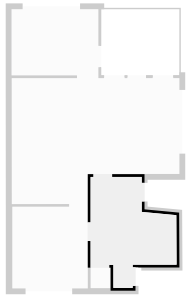


▼ Cuisine
Rez-de-chaussée

LARGEUR : 3.73 m • LONGUEUR : 2.84 m
SURFACE : 10.61 m² • PÉRIMÈTRE : 13.15 m

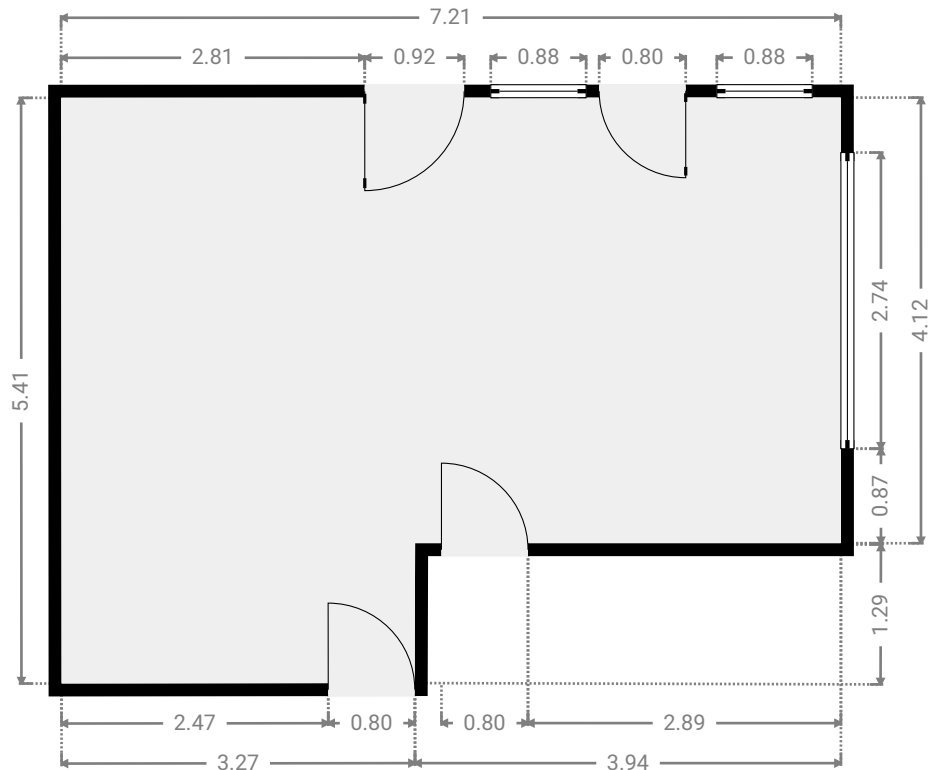
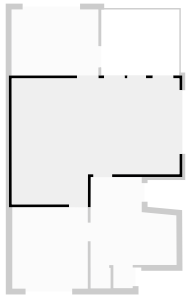


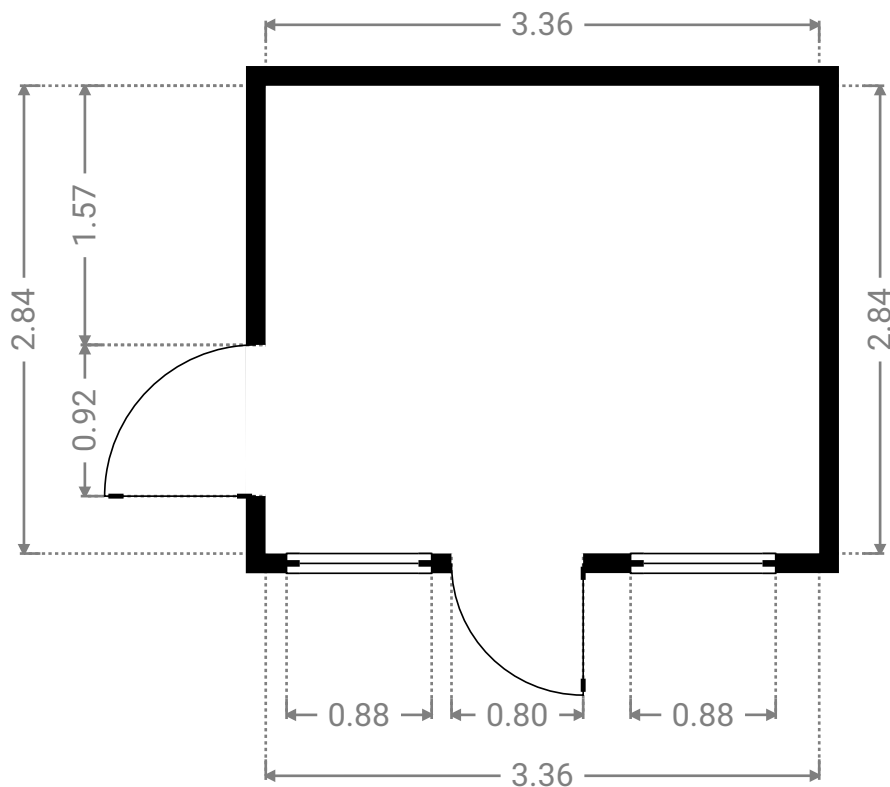
▼ Hall d'entrée
 Rez-de-chaussée



▼ Séjour
 Rez-de-chaussée

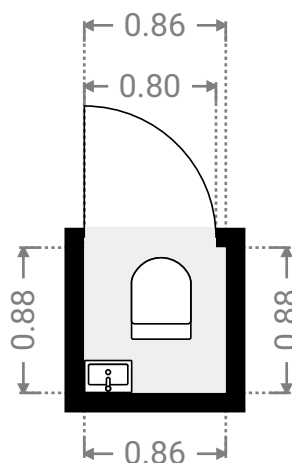
LARGEUR : 7.21 m • LONGUEUR : 5.41 m
 SURFACE : 33.91 m² • PÉRIMÈTRE : 25.23 m

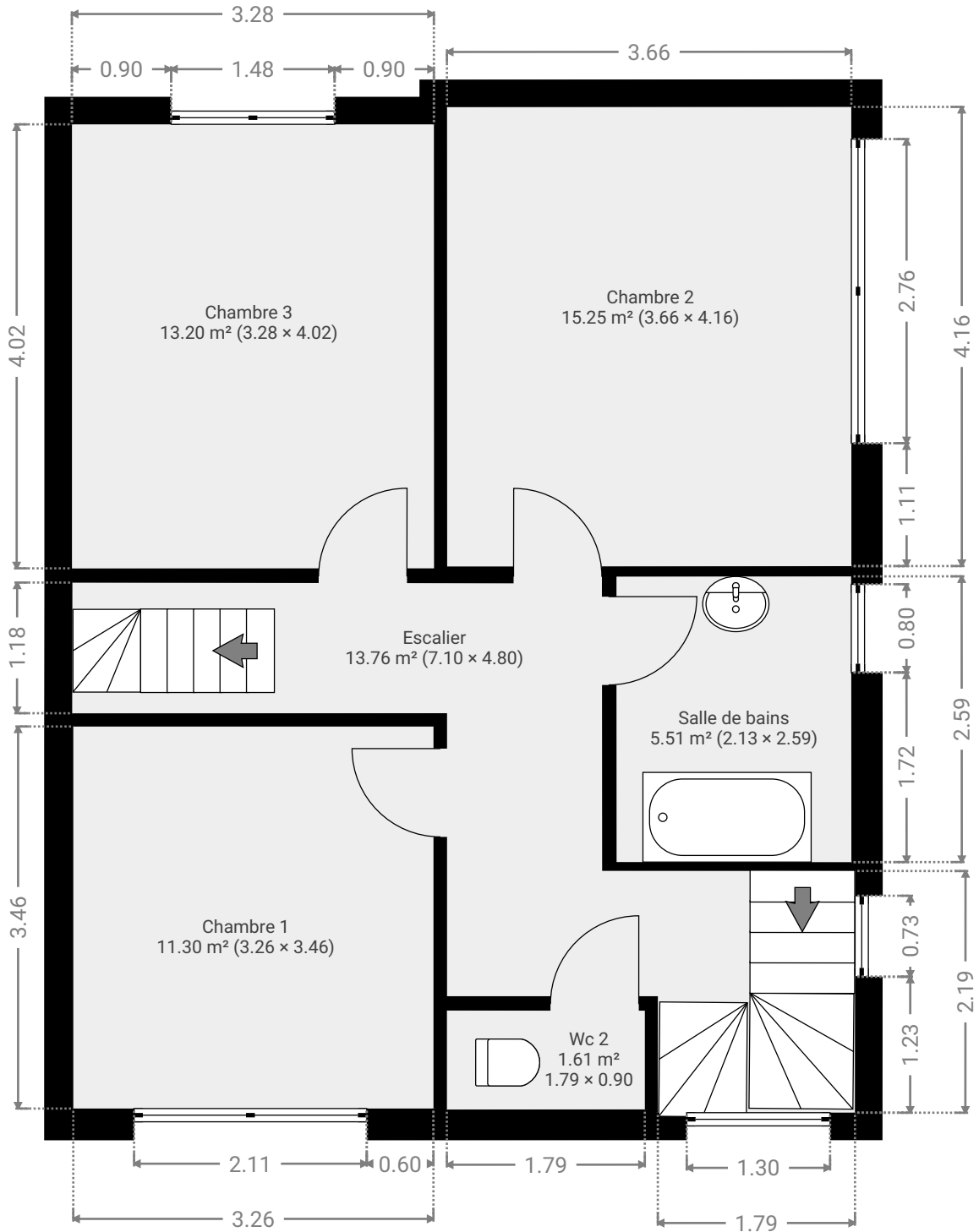




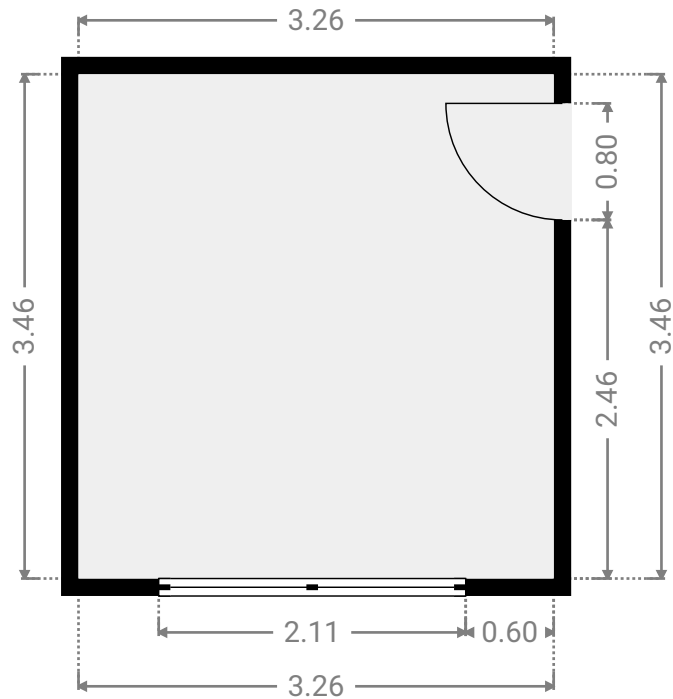
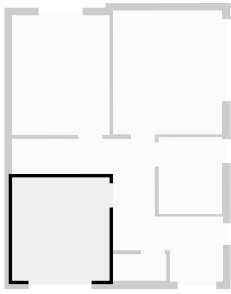
▼ Wc 1
Rez-de-chaussée

LARGEUR : 0.86 m • LONGUEUR : 0.88 m
SURFACE : 0.76 m² • PÉRIMÈTRE : 3.48 m



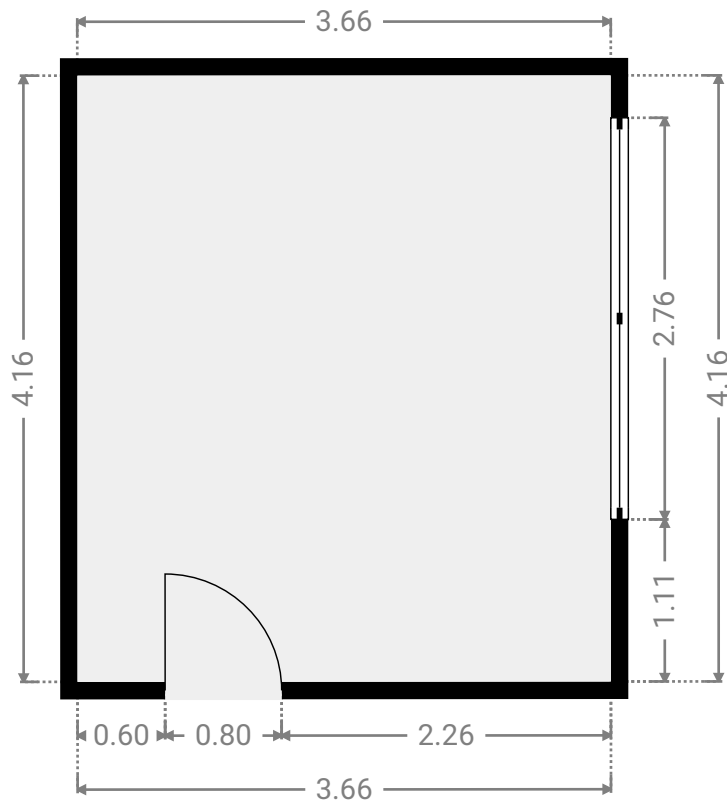
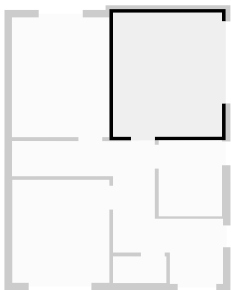


▼ **Chambre 1**
1er étage

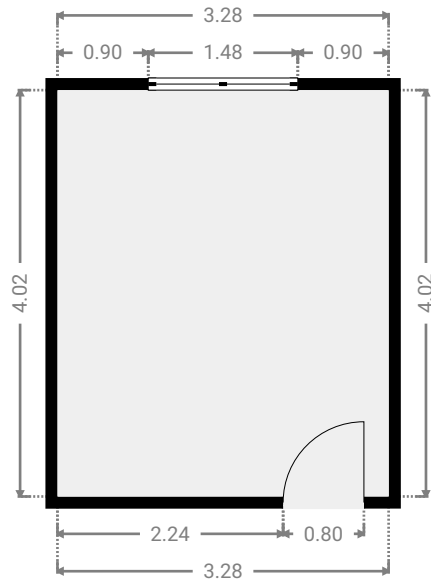
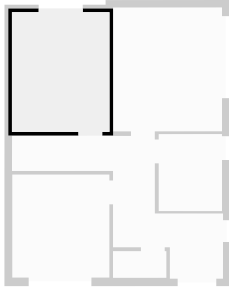


▼ **Chambre 2**
1er étage

LARGEUR : 3.66 m • LONGUEUR : 4.16 m
SURFACE : 15.25 m² • PÉRIMÈTRE : 15.65 m

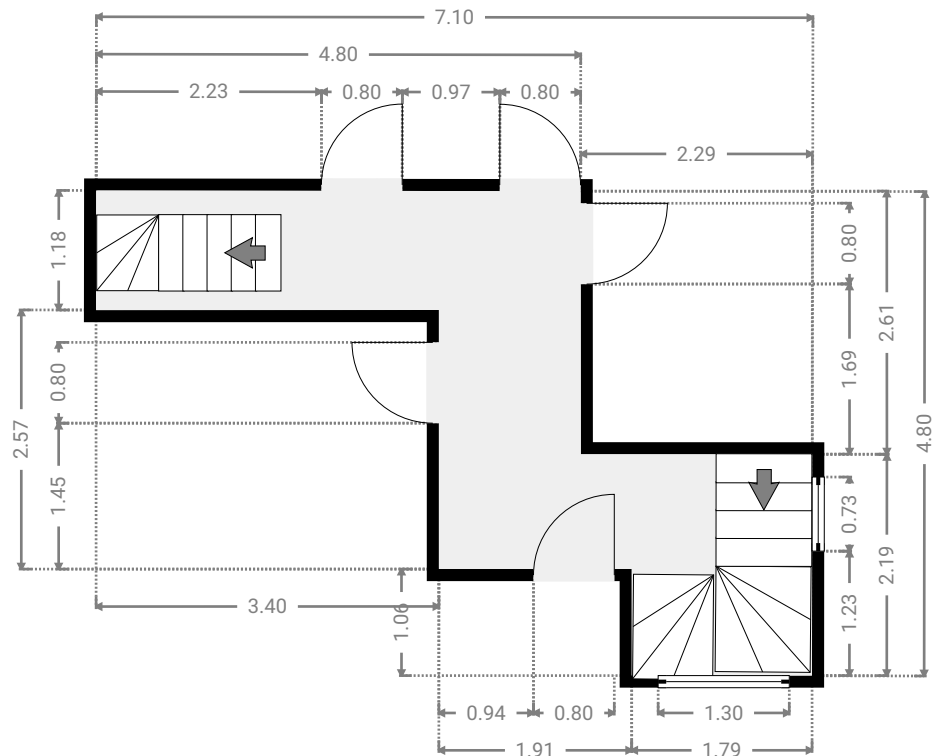
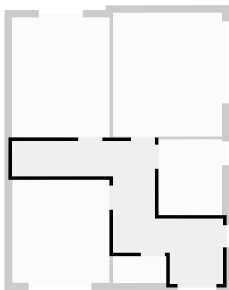


▼ **Chambre 3**
Aurélie Bellens - 6060POI0256
 1er étage

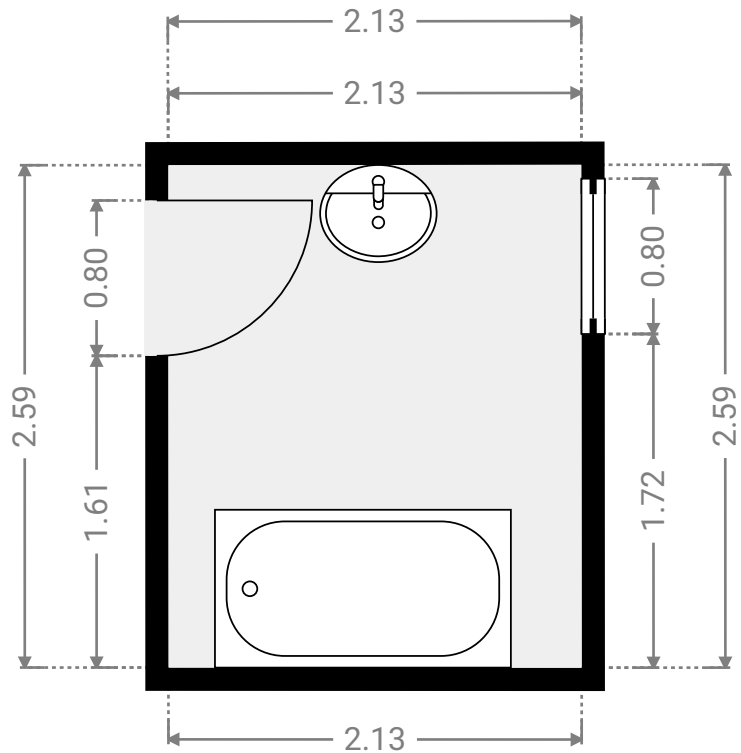
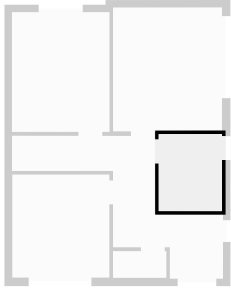


▼ **Escalier**
 1er étage

LARGEUR : 7.10 m • LONGUEUR : 4.80 m
 SURFACE : 13.76 m² • PÉRIMÈTRE : 23.78 m

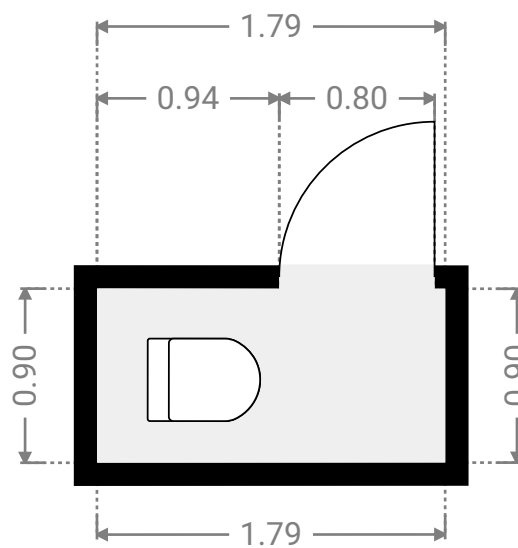
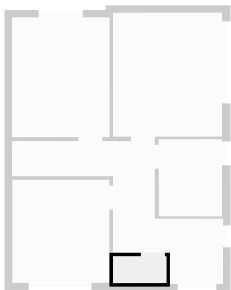


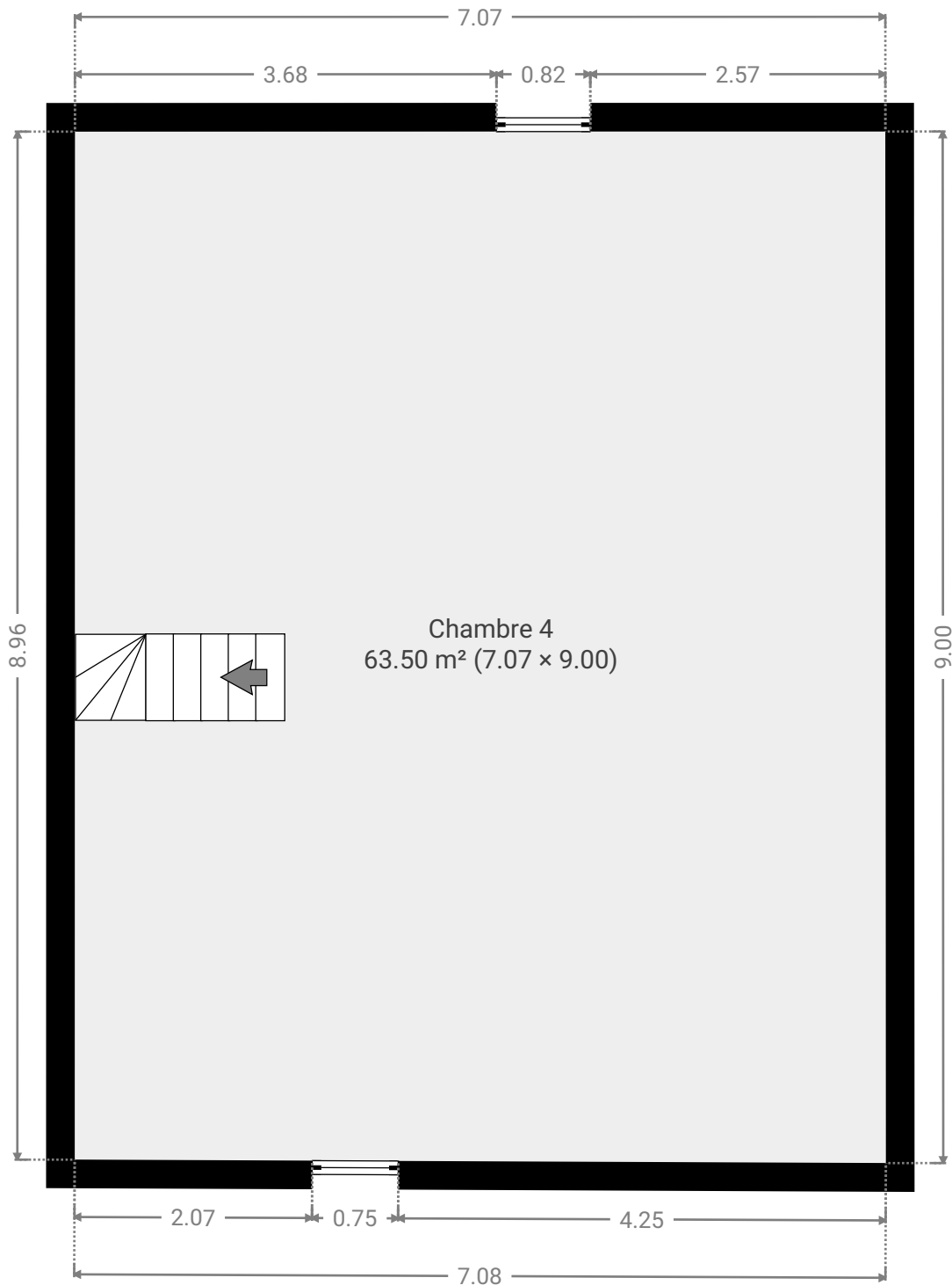
▼ **Salle de bains** Bellens - 6060POI0256
1er étage

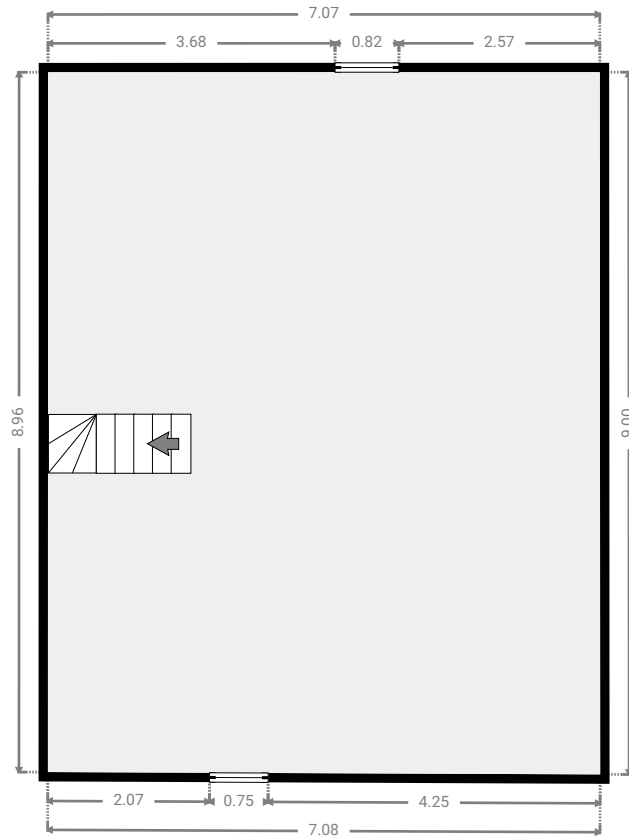
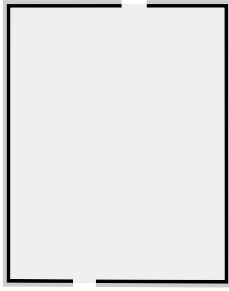


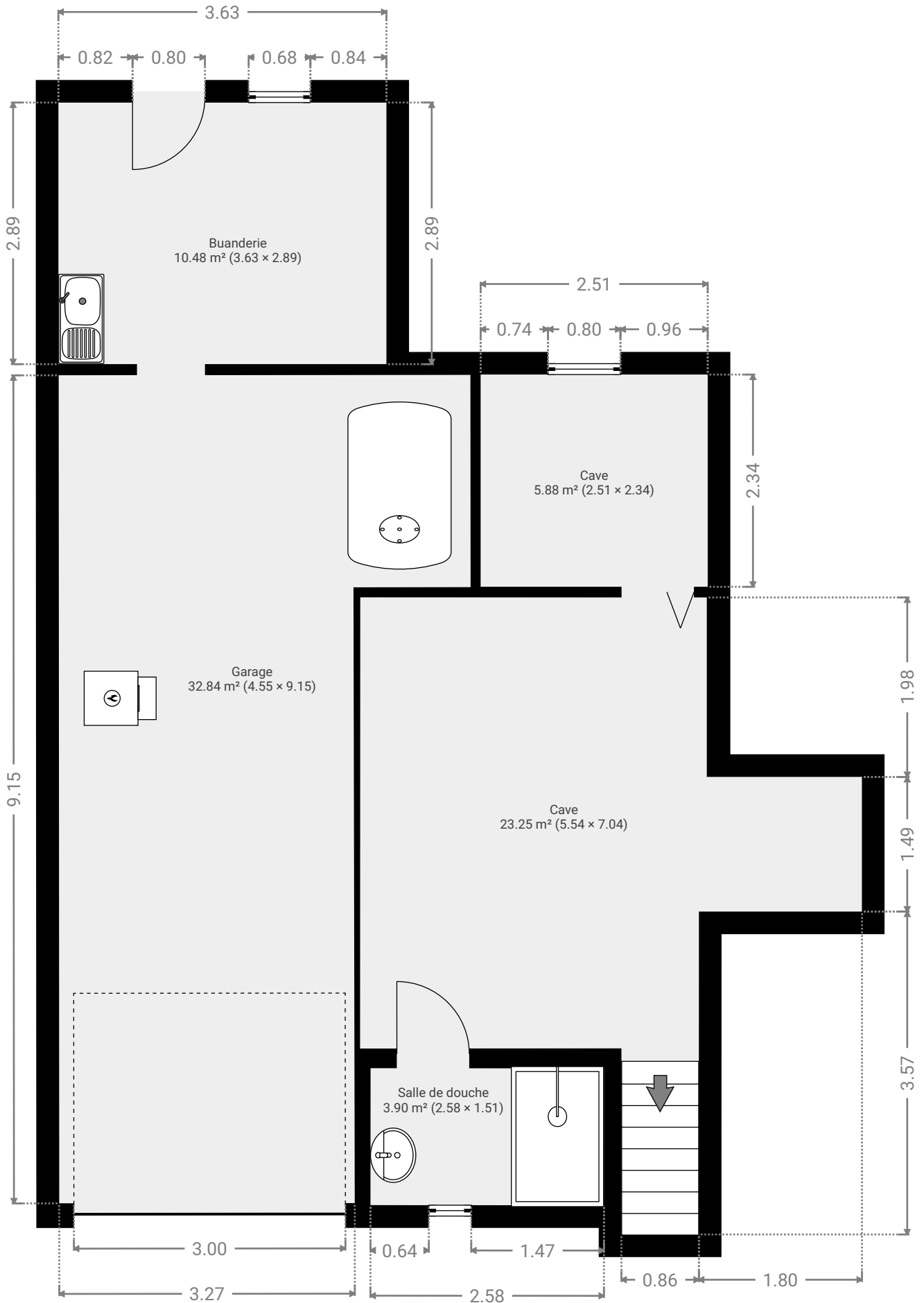
▼ **Wc 2**
1er étage

LARGEUR : 1.79 m • LONGUEUR : 0.90 m
SURFACE : 1.61 m² • PÉRIMÈTRE : 5.38 m

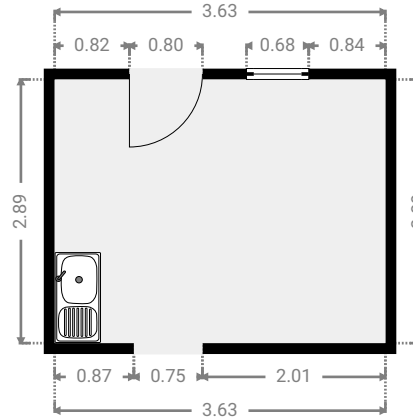
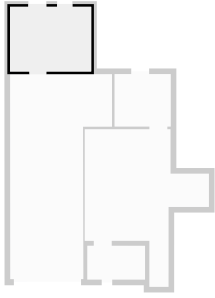






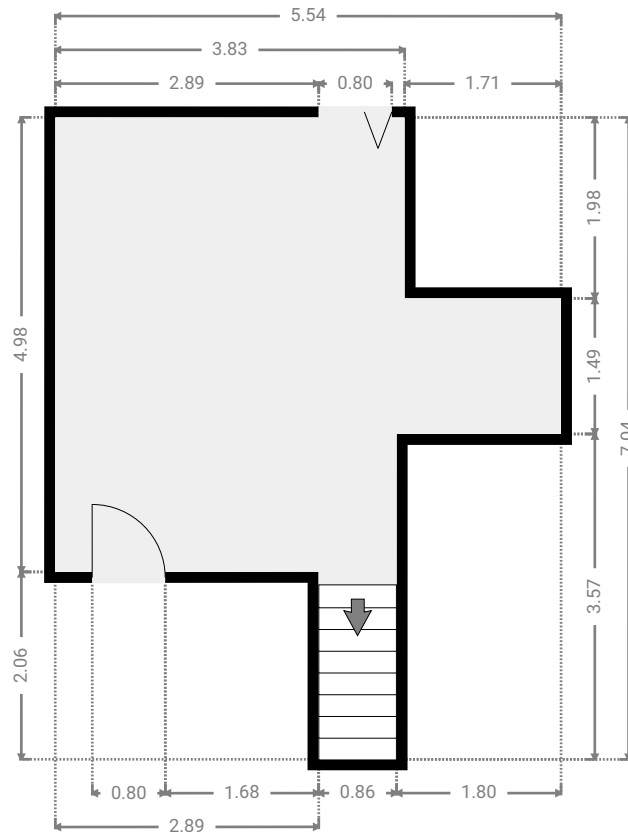
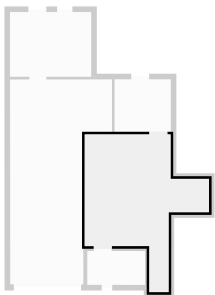


▼ **Buanderie** **Marélie Bellens - 6060POI0256**
Sous-sol

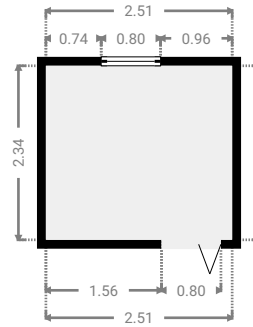
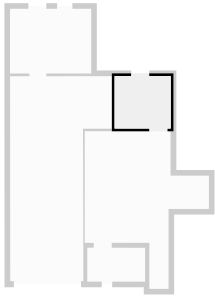


▼ **Cave**
Sous-sol

LARGEUR : 5.54 m • LONGUEUR : 7.04 m
SURFACE : 23.25 m² • PÉRIMÈTRE : 25.16 m



▼ **Cave** Aurélie Bellens - 6060POI0256
Sous-sol



▼ **Garage**
Sous-sol

LARGEUR : 4.55 m • LONGUEUR : 9.15 m
SURFACE : 32.84 m² • PÉRIMÈTRE : 27.40 m

